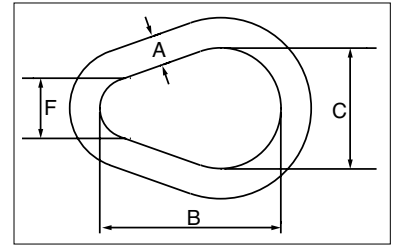


A-341



- Alloy steel — Quenched & Tempered.
- Individually Proof Tested at 2 times Working Load Limit with certification.
- Sizes up to 2" are forged.



A-341 Alloy Pear Shaped Links

5

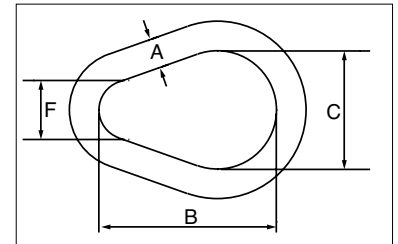
Size (A) (in)	Stock No	Working Load Limit		Weight Each (lb)	Dimensions (in)		
		(lb)	(t)		B	C	F
1/2	1013575	7000	3.15	.55	3.00	2.00	1.00
5/8	1013584	9000	4.09	1.10	3.75	2.50	1.25
3/4	1013595	12300	5.59	1.76	4.50	3.00	1.50
7/8	1013604	15000	6.81	2.82	5.25	3.50	1.75
1	1013613	24360	11.0	4.22	6.00	4.00	2.00
1 1/8	1013622	30600	13.9	6.25	6.50	4.50	2.25
1 1/4	1013631	36000	16.4	8.25	7.75	5.00	2.50
1 3/8	1013640	43000	19.5	11.25	8.25	5.50	2.75
1 1/2	1013654	54300	24.7	14.25	9.00	6.00	3.00
1 3/4	1013672	84900	38.6	22.50	10.50	7.00	3.50
2	1013690	102600	46.6	34.00	12.00	8.00	4.00
†† 2 1/2	1013703	147300	66.9	66.00	15.00	10.00	5.00
†† 2 3/4	1013712	216900	98.6	88.00	16.50	11.00	5.50
†† 3	1013721	228000	103	114.00	18.00	12.00	6.00
†† 4	1013748	373000	169	271.00	24.00	16.00	8.00

5:1 Design Factor. Based on single leg sling (in-line load), or resultant load on multiple legs with an included angle less than or equal to 120°. †† Welded Link.

G-341 / S-341



- Forged carbon steel - Quenched & Tempered.
- Self colored (S) or hot-dip galvanized (G).



G-341 / S-341 Weldless Sling Links

Size (A) (in)	Stock No.		Working Load Limit Single Pull (lb)	Weight Each (lb)	Dimensions (in)		
	G-341 Galv.	S-341 S.C.			B	C	F
3/8	1013897	1013904	1800	.23	2.25	1.50	.75
1/2	1013913	1013922	2900	.55	3.00	2.00	1.00
5/8	1013931	1013940	4200	1.06	3.75	2.50	1.25
3/4	1013959	1013968	6000	1.88	4.50	3.00	1.50
7/8	1013977	1013986	8300	2.75	5.25	3.50	1.75
1	1013995	1014002	10800	4.35	6.00	4.00	2.00
1 1/4	1014011	1014020	16750	7.60	7.75	5.00	2.50
1 3/8	1014039	1014048	20500	11.30	8.25	5.50	2.75

6:1 Design Factor. Based on single leg sling (in-line load), or resultant load on multiple legs with an included angle less than or equal to 120°.