



STATIONARY DAVIT CRANE

# CAPTAIN<sup>®</sup> 2000 SERIES



thern.com  
(507) 454-2996

# CAPTAIN® 5FT20

## STATIONARY DAVIT CRANE



### STATIONARY LIFTING POWER with Extended Reach

The 5FT20 Captain 2000 stationary davit crane (up to 2,000 pounds) is designed for permanent installation. It features a telescoping boom to reach, lift, and rotate very heavy loads 360 degrees—smoothly and easily. A screw jack comes standard to facilitate boom angle adjustments. For long or heavy lifts, add a Thern power winch for greater speed. Red-enamel finish and stainless-steel hardware resist wear in harsh conditions or environments. It's perfect for water/wastewater, manufacturing, marine, construction, and oil and gas applications.



Product Shown:  
5FT20-E2

### 360° Rotation & Flexible Operation

- Tapered roller bearing enhances smooth, 360-degree rotation under load for precise load placement. Integral 12-position (every 30 degrees) boom rotation lock facilitates heavy lifting and stabilizes unloading
- Rotation handle design does not interfere with boom angle adjustment for easier operation
- Telescoping boom length and adjustable boom angles accommodate a variety of height and reach requirements
- Choose from manual, drill-drive, or powered winch (electric, pneumatic, or hydraulic motors) operation to accommodate a variety of speed and power requirements. DC motors and various voltage AC motors available

### STANDARD CONFIGURATIONS

Series	IMPERIAL/METRIC	
	Description	Up To Capacity
5FT20-M1	Red-enamel crane and ratchet jack with M4312PB-K spur gear hand winch	2,000 lbs / 907 kg
5FT20-M2	Red-enamel crane and ratchet jack with 4WM2V-K worm gear hand winch	2,000 lbs / 907 kg
5FT20X-M2X	Gray-epoxy crane and ratchet jack with gray-epoxy 4WM2VEGRA-K worm hand winch	2,000 lbs / 907 kg
5FT20-E2	Red-enamel crane and ratchet jack with 4WP2-K electric winch	2,000 lbs / 907 kg
5FT20X-E2X	Gray-epoxy crane and ratchet jack with gray-epoxy 4WP2EGRA-K electric winch	2,000 lbs / 907 kg

### Durable Construction & Finish

- Boom, mast, and base are fabricated from heavy-gauge steel that limits deflection and meets/exceeds ASTM standards
- Red-enamel finish and stainless-steel fasteners resist the elements for long service life
- Epoxy finishes are available for corrosive environments

NOTICE: These products are not for lifting people or things over people.

Refer to technical pages for detailed performance information.

# TECHNICAL DRAWINGS & SPECIFICATIONS

## CAPTAIN® 2000

### STATIONARY DAVIT CRANE

#### CONFIGURATIONS

Model	Description	Approx. Ship Wt.	
		(lb)	(kg)
<b>Popular Configurations</b>			
5FT20-M1	up to 2,000 lb capacity with M4312PB-K spur gear hand winch and black defender-coated ratchet jack—red-enamel crane	376	171
5FT20-M2	up to 2,000 lb capacity with 4WM2V-K worm gear hand winch and black defender-coated ratchet jack—red-enamel crane	387	176
5FT20X-M2X	up to 2,000 lb capacity with 4WM2VEGRA-K worm spur gear hand winch and black defender-coated ratchet jack—gray-epoxy crane	387	176
5FT20-E2	up to 2,000 lb capacity with 4WP2-K electric winch and black defender-coated ratchet jack—red-enamel crane	423	192
5FT20X-E2X	up to 2,000 lb capacity with 4WP2EGRA-K electric winch and black defender-coated ratchet jack—gray-epoxy crane	423	192
<b>Crane Only</b>			
5FT20	up to 2,000 lb capacity—black defender-coated ratchet jack—red-enamel crane	350	159
5FT20X	up to 2,000 lb capacity—black defender-coated ratchet jack—gray-epoxy crane	350	159
<b>Winch Only</b>			
M1	M4312PB-K—spur gear hand winch only—black defender coating	26	12
M2	4WM2V-K worm gear hand winch only—powder-coat finish	37	17
M2X	4WM2VEGRA-K worm gear hand winch only—gray-epoxy finish	37	17
M3	M4312PBSS-K—spur gear hand winch only—stainless-steel finish	26	12
M4	2W40V-BM-K—worm gear hand winch—enamel finish	120	55
E2	4WP2-K electric winch—115/1/60 VAC with 6 ft pendant control—enamel finish	73	33
E2X	4WP2EGRA-K electric winch—115/1/60 VAC with 6 ft pendant control—gray-epoxy finish	73	33
E3	3WG4B-K electric winch—115/1/60 VAC with 6 ft pendant control—enamel finish	193	88
E4	4771-K electric winch—115/1/60 VAC with 6 ft pendant control—enamel finish	89	41
E4X	4771EGRA-K electric winch—115/1/60 VAC with 6 ft pendant control—gray-epoxy finish	89	41
E4DC	4771DC-K electric winch—12 volt DC with 10 ft pendant control—enamel finish	107	49
E4DCX	4771DCEGRA-K electric winch—12 volt DC with 10 ft pendant control—gray-epoxy finish	107	49

#### Wire Rope Assemblies—sold separately

Galvanized or stainless steel wire rope assemblies with swivel hook and latch complete with swaged-ball fitting to work with the quick-disconnect anchor on the winch. 316 stainless steel assemblies available—contact factory.

Wire Rope Length		Galvanized Aircraft Cable	304 Stainless Steel Wire Rope
		1/4" Dia. (6.4 mm)	1/4" Dia. (6.4 mm)
(ft)	(m)	Model No.	Model No.
28	8.5	WA25-28NS	WS25-28NS
36	10.9	WA25-36NS	WS25-36NS
45	13.7	WA25-45NS	WS25-45NS
60	18.2	WA25-60NS	WS25-60NS
75	22.8	WA25-75NS	WS25-75NS

#### PERFORMANCE

#### Captain 2000 5FT20 Series Lift Below Floor<sup>1</sup> Level

Lift Below Floor <sup>2</sup>		Wire Rope Diameter		Wire Rope Length <sup>3</sup>		Winch Configurations Maximum Winch Rating															
Minimum (D4)	Maximum (D1)	(in)	(mm)	(ft)	(m)	M1		M2		M3		M4		E2		E3		E4			
(ft)	(m)	(ft)	(m)	(ft)	(m)	(lbs)	(kg)	(lbs)	(kg)	(lbs)	(kg)	(lbs)	(kg)	(lbs)	(kg)	(lbs)	(kg)	(lbs)	(kg)		
-7	-2.1	-2	-0.6	1/4"	6	20	6.0	2,000	907	2,000	907	2,000	907	2,000	907	2,000	907	2,000	907	2,000	907
1	0.3	6	1.8	1/4"	6	28	8.5	2,000	907	2,000	907	2,000	907	2,000	907	2,000	907	2,000	907	2,000	907
9	2.7	14	4.2	1/4"	6	36	10.9	1,800	816	1,700	771	1,800	816	2,000	907	1,700	771	2,000	907	1,800	816
18	5.4	23	7.0	1/4"	6	45	13.7	1,600	725	1,500	680	1,600	725	2,000	907	1,500	680	2,000	907	1,800	816
33	10.0	38	11.5	1/4"	6	60	18.2	1,400	635	1,300	589	1,400	635	2,000	907	1,300	589	2,000	907	1,600	725
48	14.6	53	16.1	1/4"	6	75	22.8	—	—	1,300	589	—	—	2,000	907	1,300	589	2,000	907	1,400	635
63	19.2	68	20.7	1/4"	6	90	27.4	—	—	—	—	—	—	2,000	907	—	—	2,000	907	1,400	635
93	28.3	98	29.8	1/4"	6	120	36.5	—	—	—	—	—	—	2,000	907	—	—	2,000	907	1,300	589
-7	-2.1	-2	-0.6	5/16"	8	20	6.0	1,900	861	2,000	907	1,900	861	2,000	907	2,000	907	2,000	907	2,000	907
1	0.3	6	1.8	5/16"	8	28	8.5	1,600	725	1,600	725	1,600	725	2,000	907	1,600	725	2,000	907	2,000	907
9	2.7	14	4.2	5/16"	8	36	10.9	1,600	725	1,600	725	1,600	725	2,000	907	1,600	725	2,000	907	1,700	771
18	5.4	23	7.0	5/16"	8	45	13.7	1,400	635	1,400	635	1,400	635	2,000	907	1,400	635	2,000	907	1,500	680
33	10.0	38	11.5	5/16"	8	60	18.2	—	—	—	—	—	—	2,000	907	—	—	2,000	907	1,500	680
48	14.6	53	16.1	5/16"	8	75	22.8	—	—	—	—	—	—	2,000	907	—	—	2,000	907	1,300	589
63	19.2	68	20.7	5/16"	8	90	27.4	—	—	—	—	—	—	2,000	907	—	—	2,000	907	1,200	544
93	28.3	98	29.8	5/16"	8	120	36.5	—	—	—	—	—	—	2,000	907	—	—	2,000	907	—	—

<sup>1</sup> Performance characteristics are for standard products referred to in this manual. Non-standard products may vary from the original design. Contact Thern, Inc. for this information.  
<sup>2</sup> Lift below floor level varies depending on boom position and base configuration. For longer lifts, please contact factory.  
<sup>3</sup> Wire rope assemblies include a hook and a swaged-ball fitting to work with quick-disconnect anchor on winches, and 316SS wire rope is also available. Please contact the factory.

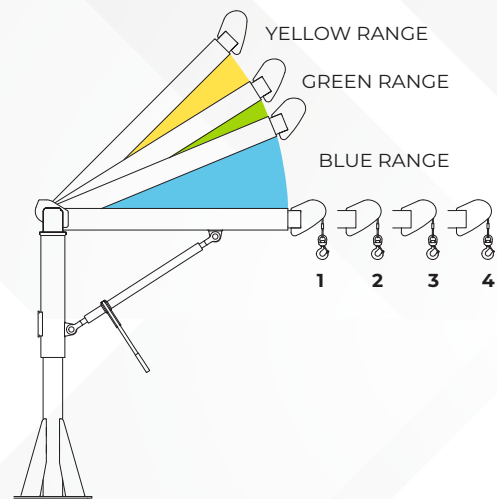
#### Winch Configurations





## Captain 2000 Performance Ratings

Boom Position	1st Layer Load Rating	
	(lb)	(kg)
BLUE RANGE	1	1,700
	2	1,400
	3	1,200
	4	1,000
GREEN RANGE	1	1,800
	2	1,500
	3	1,350
	4	1,100
YELLOW RANGE	1	2,000
	2	1,650
	3	1,500
	4	1,200

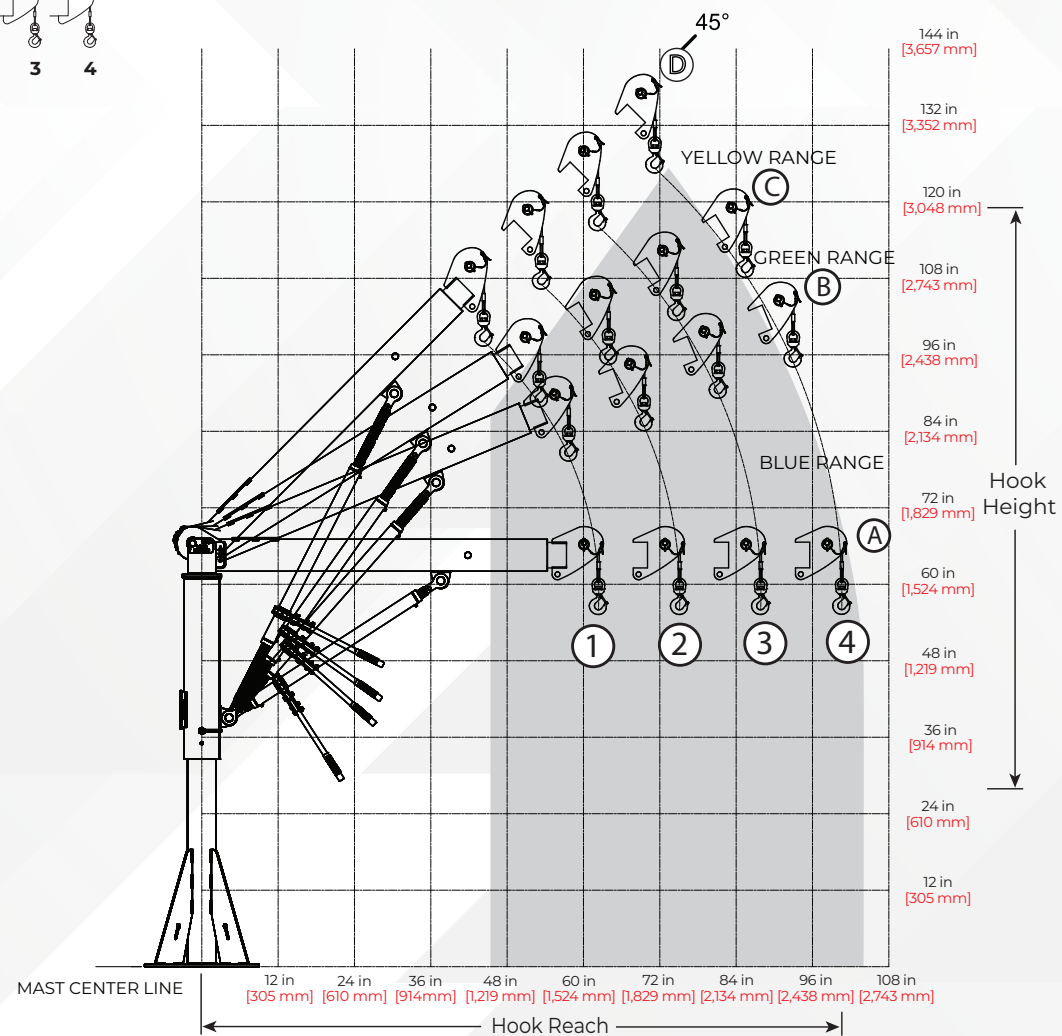
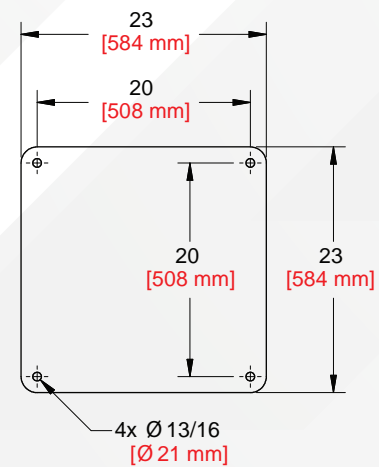


## Captain 2000 Reach & Height Above Floor

Boom Position	Hook Reach		Hook Height	
	(in)	(mm)	(in)	(mm)
A-1	62	1,574	56	1,422
A-2	75	1,905	56	1,422
A-3	87	2,210	56	1,422
A-4	100	2,540	56	1,422
B-1	57	1,447	80	2,032
B-2	69	1,752	85	2,159
B-3	81	2,057	90	2,286
B-4	93	2,362	94	2,387
C-1	53	1,346	88	2,235
C-2	64	1,625	95	2,413
C-3	74	1,879	102	2,590
C-4	85	2,159	108	2,743
D-1	45	1,143	98	2,489
D-2	54	1,371	107	2,717
D-3	63	1,600	116	2,946
D-4	72	1,828	125	3,175

Dimensions are for reference only and subject to change without notice.

### Base Dimensions



# CRANE

## OPTIONS & ACCESSORIES



Base Anchor Kit	
Model	Description
AN50A-5	(4) Hilti® zinc-plated steel fasteners 1/2" X 5.50" STL (5PA5, 5PF5, and 5PT5 cranes)
AN50A-5S	(4) Hilti® 304 stainless-steel fasteners 1/2" X 5.50" SST304 (5PA5, 5PF5, and 5PT5 cranes)
AN50A-5S316	(4) Hilti® 316 stainless-steel fasteners 1/2" X 5.50" SST316 (5PA5, 5PF5, and 5PT5 cranes)
AN62A-6	(4) Hilti® zinc-plated steel fasteners 5/8" X 6.00" STL (5PA10, 5PT10, 5PT20, and 5FT20 cranes)
AN62A-6S	(4) Hilti® 304 stainless-steel fasteners 5/8" X 6.00" SST304 (5PA10, 5PT10, 5PT20, and 5FT20 cranes)
AN62A-6S316	(4) Hilti® 316 stainless-steel fasteners 5/8" X 6.00" SST316 (5PA10, 5PT10, 5PT20, and 5FT20 cranes)

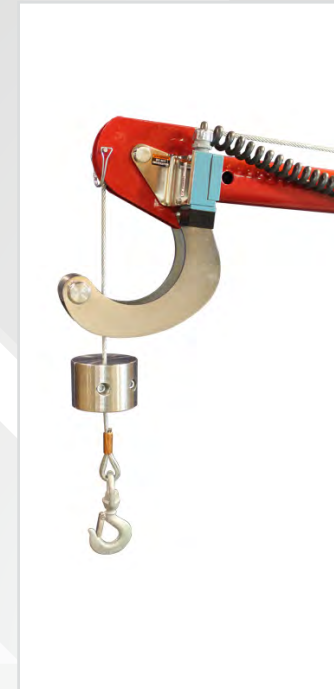
Rotational Lock	
Model	Description
5P5LCK	For pedestal, wall, and flush-mount bases, 316 stainless steel—available for use 5PA5, 5PF5, and 5PT5

Cable Spooler	
Model	Description
RW50	316 stainless-steel reel winds up wire rope when detached from crane

Wire Rope Keeper	
Model	Description
RK19-25S	304 Stainless-steel bracket holds free end of the wire rope when detached from the crane
RK19-25S316	316 Stainless-steel bracket holds free end of the wire rope when detached from the crane

Roller Ball Bearing for 5PT10 Series Crane	
Model	Description
5PT10BRG	Red electrostatic, powder-coat paint finish
5PT10BRG-S	304 stainless-steel, electro-polished finish for added protection against corrosion
5PT10BRG-S316	Stainless-steel, electro-polished finish for maximum protection against corrosion
5PT10BRG-SS	304 stainless steel, for use with stainless-steel base only
5PT10BRG-SS316	316 stainless steel, for use with stainless-steel base only

Roller Ball Bearing for 5PT20 Series Crane	
Model	Description
5PT20BRG	Red electrostatic, powder-coat paint finish
5PT20BRG-S	304 stainless-steel, electro-polished finish for added protection against corrosion
5PT20BRG-S316	Stainless-steel, electro-polished finish for maximum protection against corrosion
5PT20BRG-SS	304 stainless steel, for use with stainless-steel base only
5PT20BRG-SS316	316 stainless steel, for use with stainless-steel base only



Limit Switch Ready Winch Options	
Model	Description
NOTE: Limit switch winch option requires purchase of Limit Switch and Headache Ball (sold separately)	
<b>For 5PF5, 5PA5, 5PA10, 5PT5, 5PT10, 5PT20 Series Cranes (sold separately)</b>	
E2L (5PA5, 5PA10)	4WP2V-KL electric winch – 115/1/60 VAC with 6 ft pendant control – enamel
E2LX (5PA5, 5PA10)	4WP2VEGRA-KL electric winch – 115/1/60 VAC with 6 ft pendant control – epoxy gray
E4L	4777-KL electric winch – 115/1/60 VAC with 6 ft pendant control – enamel
E4LX	4777EGRA-KL electric winch – 115/1/60 VAC with 6 ft pendant control – epoxy gray
E4DCL	4777DC-KL electric winch – 12 volt DC with 10 ft pendant control – enamel
E4DCLX	4777DCEGRA-KL electric winch – 12 volt DC with 10 ft pendant control – epoxy gray

<b>For 5FT20 Series Crane Only (sold separately)</b>	
E2L	4WP2-KL electric winch – 115/1/60 VAC with 6 ft pendant control – enamel
E2LX	4WP2EGRA-KL electric winch – 115/1/60 VAC with 6 ft pendant control – epoxy gray
E4L	4771-KL electric winch – 115/1/60 VAC with 6 ft pendant control – enamel finish
E4LX	4771EGRA-KL electric winch – 115/1/60 VAC with 6 ft pendant control – gray-epoxy finish
E4DCL	E4DCL 4771DC-KL electric winch – 12 volt DC with 10 ft pendant control – enamel finish
E4DCLX	4771DCEGRA-KL electric winch – 12 volt DC with 10 ft pendant control – gray-epoxy finish
<b>For 5PT30, 5FT25, 5FT40 Series Crane Only (sold separately)</b>	
E2L	3WG4B-KL electric winch - 115/1/160 VAC with 6 ft pendant control – enamel finish
E2LX	3WG4BEGRA-KL electric winch - 115/1/160 VAC with 6 ft pendant control – epoxy gray finish
E2TL	3WG4BMT-K electric winch - 115/1/160 VAC with 6 ft pendant control – enamel finish (Unavailable for use with 5FT40)
E2TLX	3WG4MTX-KL electric winch - 115/1/160 VAC with 6 ft pendant control – epoxy gray finish

Drill Drive Kit	
Model	Description
ED330-DW11	120 VAC, 11-amp, 330 rpm drill motor to power drive the hand winch. Only available for cranes configured with the M2 winch option. Includes 1-1/8" hex drive socket
ED300-DW06	Cordless drill kit, 60 V brushless motor, 300 rpm drill motor to power drive the M2 hand winch option. Includes 1-1/8" hex drive socket
ED400-DW09	Heavy-duty cordless drill kit, 60 V brushless motor, 400 rpm drill motor to power drive the M2 hand winch option. Includes 1-1/8" hex drive socket

Headache Ball	
Model	Description
HB10-12-25	Red enamel painted 10 lb fits 1/8" to 1/4" rope
HB10-25-38	Red enamel painted 10 lb fits 1/4" to 3/8" rope
HB10S-12-25	Stainless-steel 10 lb fits 1/8" to 1/4" rope
HB10S-25-38	Stainless-steel 10 lb fits 1/4" to 3/8" rope
HB10S-44-50	Stainless-steel 10 lb fits 7/16" to 1/2" rope

Base Extension	
Model	Description
5BE5-15	Available on 5PF5, 5PT5, 5PT10, and 5PT20 with powder-coat, galvanized, 304 & 316 stainless-steel, and epoxy finishes
5BE10-15	
5BE20-15	





**MADE IN USA** 

**Thern, Incorporated**

World Headquarters  
5712 Industrial Park Road Winona, MN USA  
Toll Free: 1-800-843-7648  
Phone: 1-507-454-2996  
[www.thern.com](http://www.thern.com)

**Thern Europe**

Bedrijvenpark Twente 454e  
7602 KM Almelo The Netherlands  
Phone: +31-546-898-380  
[europa@thern.com](mailto:europa@thern.com)